



United Kingdom 2016

Week. 25-26-27

From Lizard Point and Land's End in the southwest to
Muckle Flugga at the far north of the Shetland Islands

The journey goes through Denmark, Germany, the Netherlands, Belgium to Calais in France. From there, it's a ferry across the English Channel to Dover.

Border crossing between Germany and the Netherlands



First canal crossing in the Netherlands, one of many.





Brighton, England's south coast.

The promenade was filled with cyclists, the reason being a bike race was ongoing.



The worst weather I experienced was on the Isle of Wight, fog, and rain. However, I could ascertain that the sea gives and takes; here, it had destroyed a pier and the descent to the beach. Soon, the road too is at risk.



Once back on the mainland, the weather improved.

The plan was to visit Stonehenge in the afternoon. Imagine my surprise when it was closed, and a police officer just waved traffic on, and this on the year's longest day, the summer solstice.





Lizard Point, England's southernmost tip, a rocky and dangerous coast for mariners.
The old lifeboat station still exists but is not in use.





Lynton, North coast of Somerset.



Wales, green tunnels, and well-trimmed hedges along many roads.





The evening was spent
on the Welsh coast in
Aberaeron.





Wales, famous for its beautiful landscape, even the coast is incredibly beautiful. Barmouth and Barmouth Bay.

Tremadog Bay with the Llyn Peninsula in the background.

Snowdon National Park.





Llandudno Pier and Llandudno, a holiday resort on Wales' north coast.

The Great Orme winds around Great Orme's Head.





Peak District National Park,
east of Manchester.





Yorkshire Dales National
Park.

Ribblehead viaduct.

Stone House.





Lake Districk National Park.

Here is Scafell Pike, the highest mountain in Great Britain, at 978 meters above sea level.





Scotland, southern part between
Dumfries and Edinburgh.

Scottish Highlands, Cairngorms National Park.



Fort William, where the Caledonian Canal begins/ends, with Inverness at the other end.





Fort Augustus, in the middle of the canal.

The Caledonian Canal passes through a number of lakes, the most famous being Loch Ness, with the others being Loch Oich, Loch Lochy, and Loch Linnhe.





Gills Bay and ferry towards
St. Margaret's Hope on
South Ronaldsay, Orkney
Islands.





Took a ferry from Kirkwall on Orkney to Lerwick on Shetland. On the ferry, I met, among others, a Dutchman, Rob de Redelijkheid, and had pleasant company for a few days.

The goal for both of us was the northernmost point of the British Isles. Muckle Flugga with its lighthouse and Out Stack are the northernmost rocks. It requires about a 5 km walk through Hermaness National Nature Reserve to get there.





Birdlife is a significant part of Hermaness National Nature Reserve. Unst, Shetland



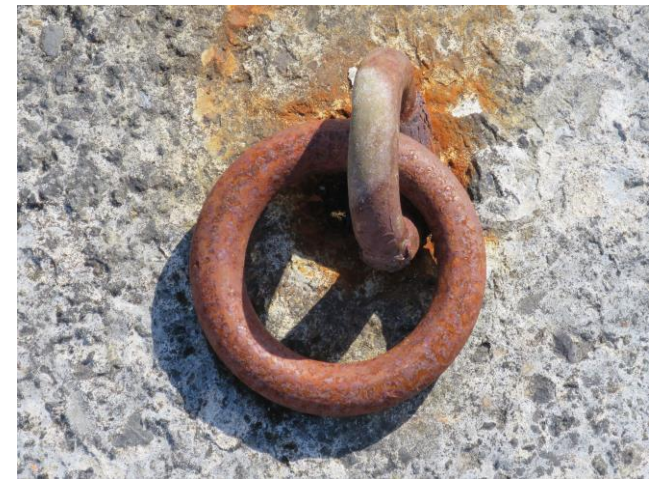
Welcome to the northernmost point of the UK. Only Muckle Flugga and Out Stack lie between here and the North Pole.



Please return to the boardwalk by following the cliff top. The top of Hermaness Hill and the centre of the reserve are sensitive bird breeding areas.



Yell, Shetland





Yell, Shetland



Weisdale, Mainland.





Shetland





Lerwick, Shetland.





Lerwick, Shetland.





Lerwick, Shetland.



Mainland, Shetland.



St. Ninians Island, Sjetland.





Sumburgh Head, Shetland.



Then, I leave Shetland,
passing Fair Isle on the way
towards the Orkney Islands.



Havssula





North Ronaldsay Lighthouse greets us in the sunset as we enter among the Orkney Islands.

The highest land-based lighthouse in Great Britain. The oldest intact lighthouse in Scotland, from 1789. The last working foghorn in Scotland.

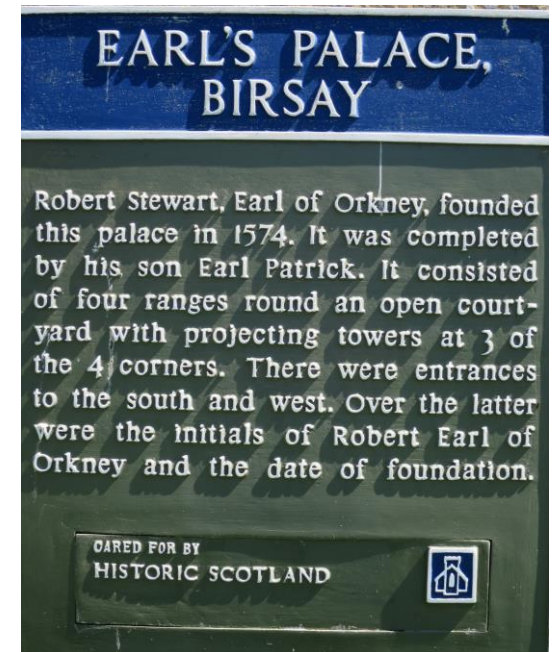
Standing stones of Stennes, Orkney.





The Brough of Birsay, remains of a Viking settlement from the 11th century.







Skara Brae, Bay of Skail, Orkney.
Here lived 50-100 people in 8
stone houses between the years
3180-2500 BC.



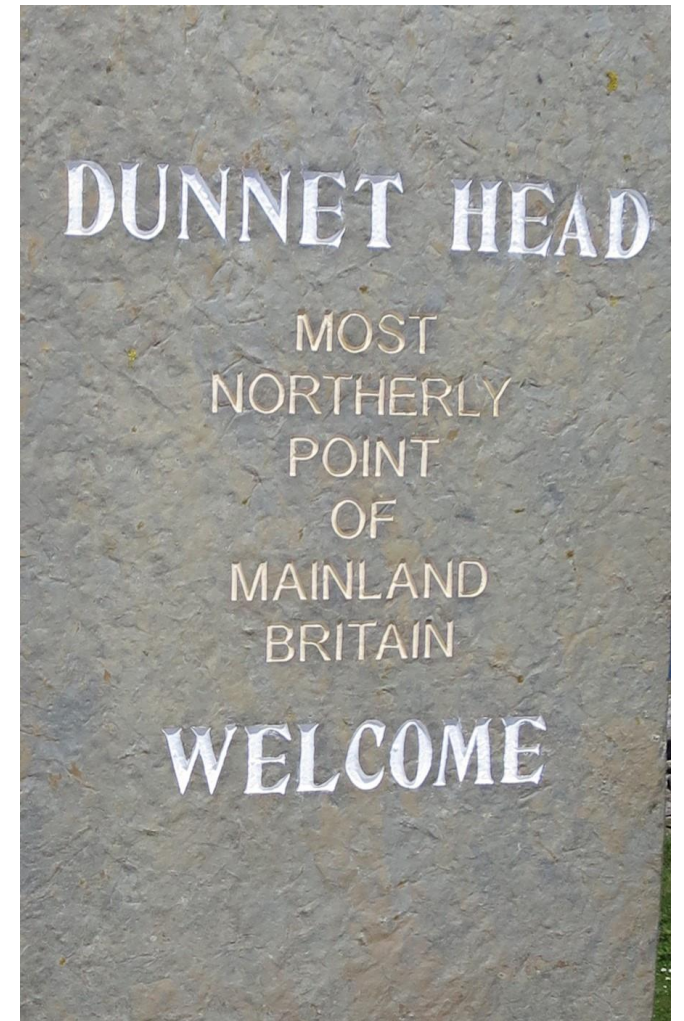


Stromness, Orkney.





Back in Scotland. There are more than 200 lighthouses around Scotland's coast.





Smoo Cave. Scotland.





Tongue, Scotland





Pass of the Cattle, Scotland.



Back at the Caledonian Canal and Fort William.



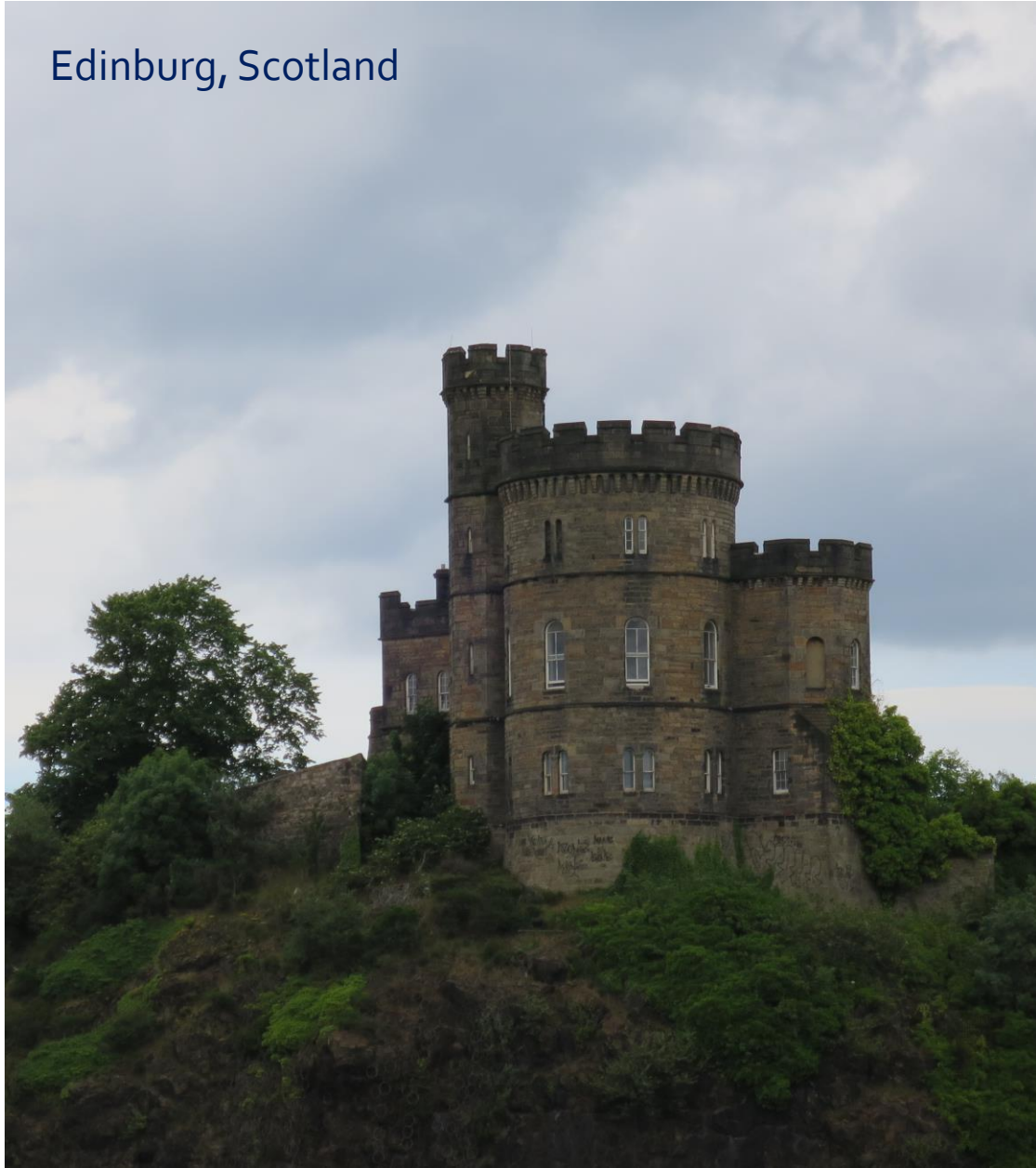
Edinburgh



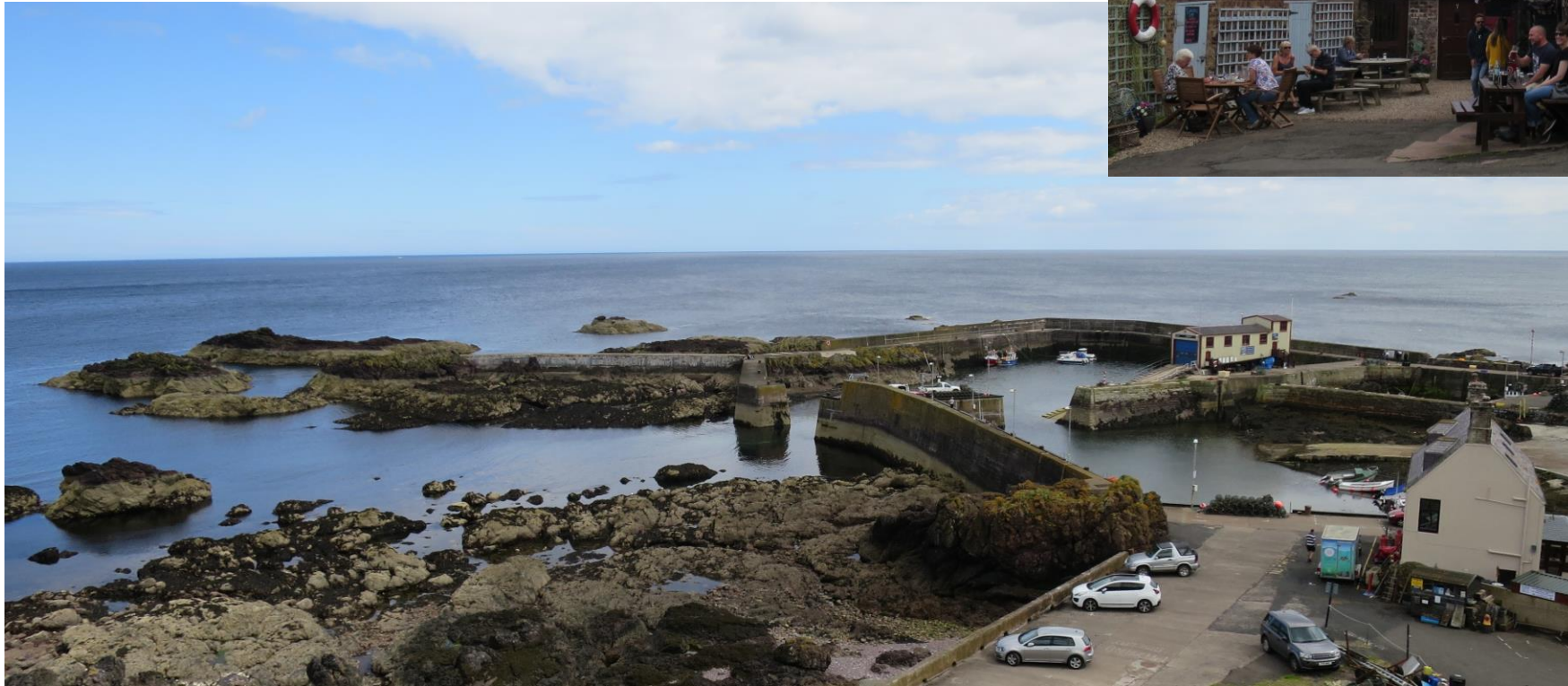
Edinburgh, Scotland



Edinburg, Scotland



Eyemouth, Scotland





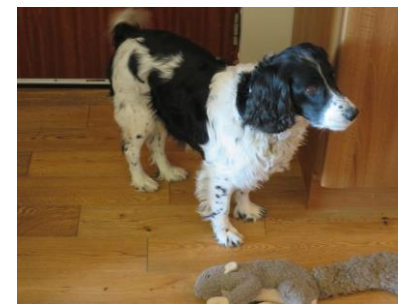
Berwick-upon-Tweed.





Claire and John Mole,
Whitsome.

Jasper



Lindsfarne Castle, Holy Island





Bamburgh.

Englands bridges and green tunnels.





On May 2, 1835, William Harley was born in Littleport, 1860 he emigrated to the USA.

His son, William Sylvester Harley, founded the Harley-Davidson Motor Company together with Arthur Davidson and his brothers William and Walter in 1903.



Harwich, waiting for the ferry from England to Hook of Holland and the journey home through Holland, Germany, and Denmark.

The most containers win!?!

